

splash
display



Modular Display Catalogue - Essential Collection

2

The Banner Collection

A selection of tension, roller and cassette banners, offering style and quality at very affordable prices. All our banners are lightweight, portable and very easy to assemble in any location. All of our banners are supplied complete with a carry bag for easy transportation.



telescopic pole for adjustable height

Simply swap cassettes to change your message



Imagine



Original 2



Barracuda



Original 2 - Code UB321

This versatile mid-range banner is available in 6 width options.

- Anodised silver or textured black powdercoated finish

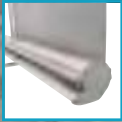
Imagine - Code UB502C

This cassette banner delivers a combination of style and ease of use with reliability and tough construction needed for multiple campaigns.

Barracuda - Code WH321C

A very popular, strong but stylish banner, proven as a reliable banner for regular use. Ideal for simple displays or exhibitions.

- Available in anodised silver



Pacific



Orient

Pacific - Code WH351

A quality lightweight roller banner with slim base and bungee pole making it very compact, complete with a twist out foot for extra stability.

Orient - Code WH353

Styled on a highly popular base profile, which is particularly neat and stable.

NEW

6
WIDTHS

Cruz



Cruz - Code UB506 (single-sided) + UB501 (for upgrade to double-sided)

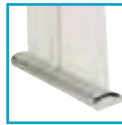
A sleek, premium banner built to a high specification finish with low profile base and cast chrome end plates.

- Available single or double-sided

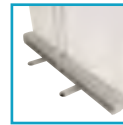
Name	Graphic Height (mm)	Graphic Width (mm)	Type	Rail Fixing
Imagine	750 - 2130	800/1000	Cassette	Universal grippa/ adhesive rail
Original 2	2145	600 - 2000	Roller	Universal grippa/ adhesive rail
Barracuda	750 - 2130	800/1000	Roller	Universal grippa/ adhesive rail
Pacific	2130	800/1000	Roller	Universal grippa/ adhesive
Orient	2110	800/1000	Roller	Universal grippa/ adhesive
Cruz	2120	800/850/1000	Single or Double Roller	Universal grippa/ adhesive rail
Grasshopper	2000	800/850	Roller	Self adhesive top rail
Delta	1992	850	Roller	Quality Snap Rail
Senator	2010	800/850/1000	Tension	Quality Snap Rail
Stealth	1992	850	Tension	Unique self adhesive top rail



Delta



Grasshopper



Senator



Delta - Code UB205-850

Innovative compact roller banner, with quality snap rail and wide footprint for extra stability. Designed for maximum convenience with padded carry bag.

Grasshopper - Code UB191/UB193

Give your promotion maximum impact with this stylish and eye-catching banner system. Extremely quick to put up and easy to use, this banner system is ideal for any exhibition environment.

Senator - Code UB100-800

- Snap rail enables easy graphic changes
- Rail is completely hidden, giving a seamless graphic
- Aluminium with anodised silver finish
- Bungee pole

Stealth Banners

Stealth is a modular, linkable banner system designed to create seamless graphic displays, providing a highly portable and easy-to-use backdrop for all types of presentation, exhibition or retail application.



Single-sided banner
Code UB106



Double-sided banner
Code UB106 + UB106-002



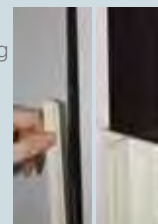
Two linked units



Two banners with flexible linking panel
Joining Panel 2000mm (h) x 600mm (w)
Joining kit Code UB106-001



Each banner pole top includes a unique sprung graphic fixing unit that features an automatic tensioning system to ensure your graphics are held taut.



Linked Graphics are held in place along the rear vertical joint using a magnetic joining strip.



Twist & Lock Pole

Each top graphic fixing also takes up two universal spotlight fittings to accommodate single or double-sided lighting.



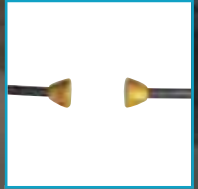
6

The Pop-Up Collection

Using the very latest technology to ensure fast installation and easy graphic positioning, the Evolution Pop-Up range adds high impact and flair to any presentation or exhibition stand



Fully Magnetic Hanging System with magnetic graphic clips and hanging bars



Snap-up frame with magnetic locking arms

Elipse Plus Case
with integral leaflet holder (see page 10)

Evolution Xpress - Code EK302X-C (for 3 x 3 Graphic Kit shown above)

- Evolution Xpress is a fully magnetic system making it the simplest pop-up to assemble
- Available as frame only, graphic hanging kit or complete with fabric panel kit
- Option for graphics to be displayed on both sides
- Available in a variety of sizes
- 3 x 3 kit - 2225mm (h) x 2540mm (w) x 685mm (d)

We have a range of lights available for our pop-up systems
(See page 19 for details)



Powerspot 950



Powerspot 1000



Powerspot 1050

Impact Bundle

3 x 3 Kit Code: IMP-3X3C

3 x 4 Kit Code: IMP-3X4C

- 3 x 3 or 3 x 4 curved frames, supplied with mag bars, hangers and kickers, and one 30m roll of magnetic tape
- Kit also includes a Zeus case and hinged thermoformed tabletop in beech, as well as 2 x Powerspot 950 halogen lights
- Available in a combination of 3 x 3 and 3 x 4 curved kits

3 x 3 2540mm (w) x 685mm (d)

3 x 4 3070mm (w) x 960mm (d)



Wrap not included

Zeus Case

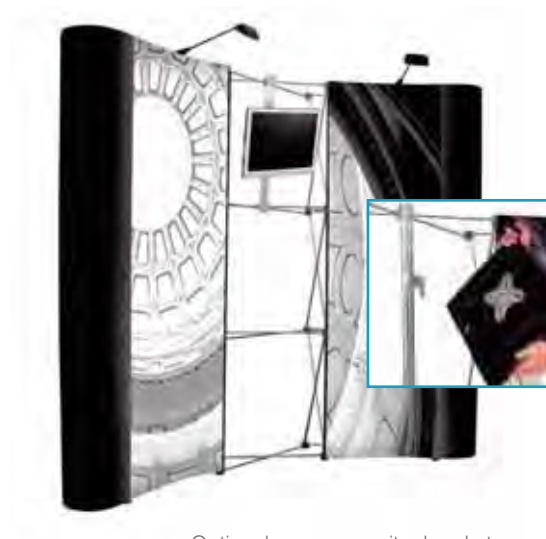
Evolution Hop-Up

- Available in 3 x 2, 3 x 3 and 3 x 4 straight formats
- **NEW** - Available as a 2 x 2 desktop (HU301-001)
- Wheeled carry bag (HUB-001) available as an optional extra
- Stabilising feet (ES507) & spotlights available as options
- Optional lights are available

3 x 2 1525mm (w)

3 x 3 2260mm (w)

3 x 4 2990mm (w)



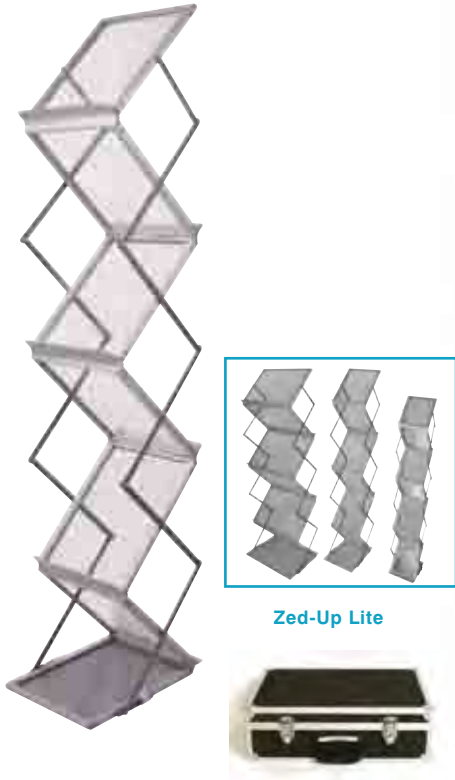
Optional pop-up monitor bracket

Code: XPUSMK2



The Literature Holder Collection

A comprehensive range of stylish and functional literature or brochure display units to suit any presentation or exhibition. All our literature holders are collapsible for easy transport and come complete with a convenient carry bag or case.



Zed-Up Lite

Zed-Up Lite - Code AS315 (A4)
AS319 (A3) AS318 (A5)

Zed-Up Lite is a popular, stylish range of aluminium literature stands with a smart anodised silver finish.

Available in 3 pocket size formats.

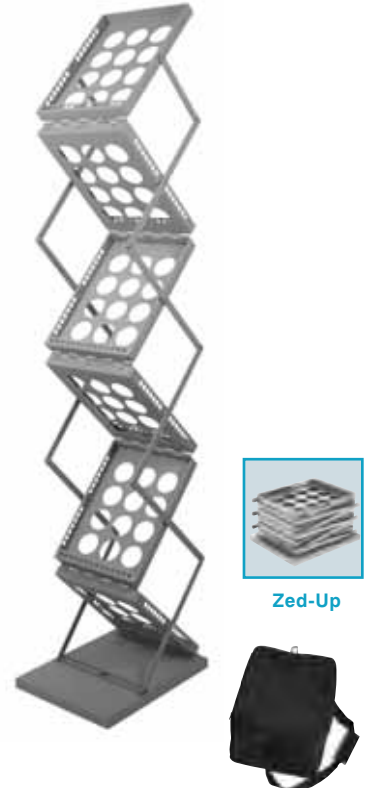


Aura

Aura - Code WH404

Aura is a smart cantilever literature holder with a wooden birch-effect base, making it ideal for any stylish environment.

4 x A4 portrait format.



Zed-Up

Zed-Up- Code WH412

Our best value double-sided literature holder with silver powdercoat finish.

6 x A4 capacity portrait.

The Outdoor Collection

Our collection of outdoor and indoor promotion units are weatherproof, robust and simple to use. Moulded bases can be filled with either water or sand, making them especially suitable for outdoor use. All our outdoor products are designed to withstand a moderate breeze (13 - 18mph winds).



Zoom
Feather



Desktop Zoom - Code UB723-C

Striking lightweight desktop flag, ideal for branding and direct marketing promotions.

- Small and compact
- Easy to assemble



Ground Stake
UB720-C



Drive-on Car
Foot UB721-C



Base Foot
(includes bag)
UB718-C



Weighting Ring
UB719-C

(All feet sold separately)

Zoom Flags - Quill (UB717-C), Feather (UB724-C), Mini zoom (UB726-C)

Zoom flags are ideal for all types of indoor or outdoor display and events.

- Lightweight portable outdoor banners
- Aluminium base with glass fibre pole, making it easy for transportation
- Suitable for lightweight fabric graphics
- Withstands winds 13 - 18mph approx. (Beaufort scale 4)



Zoom Quill

Mini Zoom

10

1000mm max.



5.3m max.

Wind Dancer
5m shown

Wind Dancer Flag- Code WD105

- Portable and lightweight
- Telescopic aluminium pole with moulded plastic base for water and sand
- Eyelet fixings for graphic attachment
- Withstands winds 13-18mph approx. (Beaufort scale 4)



Wind Dancer
Bag (5m)
Code UB716-C

Blizzard - Code UB701-C

An ideal outdoor banner for point of sale, retail display or exhibition environments.

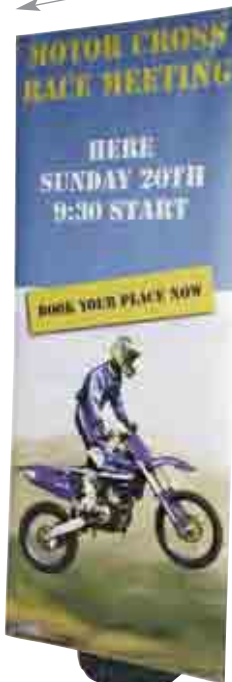
- Adjustable graphic height and width
- Graphic is supported on simple eyelets
- Hollow plastic base for water or sand
- Optional carry bag available



Blizzard Bag

Code AB140-C

800mm



2000mm

Monsoon

Code: UB707-C (1000 high x 2500 wide)

Code: UB711-C (1250 high x 3000 wide)

A large format double-sided banner 'A' frame, made from lightweight aluminium, ideal for use with PVC eyelet banners.



The Linear Collection

The Linear system consists of a unique range of aluminium frame profiles, components and accessories designed to offer the most cost-effective, flexible display solutions in the market. Kits are made as portable as possible using specially designed rigid, wheeled cases that hold components safely in place during transportation.



Exec. Wave
With 2 LCD mounts & 4 literature holders
(LCDs not included, spotlights optional
extra see page 18)

Exec. Wave

A versatile freestanding display kit, ideal for showroom and retail promotions and product launches.

Available in a choice of configurations featuring LCD mounts, literature holders and shelves.

Overall assembled size (mm):
2475(h) x 3000(w) x 500(d)

with 2 LCD mounts & 4 shelves
LK031-001

with 2 LCD mounts & 4 lit. holders
LK031-002

with 6 literature holders
LK031-003

Accessory Options



Aluminium literature holder - LN112



LCD Brackets
3 types available

Powerspot 1000 Pop-Up
Floodlight - black or silver



Not included in kits
(see page 19)



Linear Shelf - LN130

Graphic & Literature Post

Code **LK026-001**

Complete with 3 x A4 Literature holders
and 450mm diameter domed base.

Suitable for rigid graphic such as foam
PVC sheets (not included).



12

Linear Modular Stands

If you have a range of display and exhibition needs that require something more substantial than one of our standard kits, it makes sense to invest in a custom designed modular Linear stand - Linear gives you the best of both worlds.

Use Linear display components to create easy-to-assemble solutions that fit your needs; reconfigure them for your next exhibition, retail display, seminar, product launch, showroom or reception area.



Linear & Vector Accessories



Side Feet
(Vector kit option only)
SL1



Poser Table
LN315/LN316



Aluminium literature holder
LN112-C



Arch Feet
(Vector kit option only)
SL2



LCD Brackets
Upto 24"
LN111



Powerspot
1000/1050
PS1000/PS1050

Wheeled Moulded Carry Case **AC506**
(optional inserts available)

Wheeled Carry Case **AC504**

Specially designed carry cases are available for safe and convenient transportation of your display stand.





Curved Graphic Panel Kit B

Height Width Radius

LK024-C 2000mm x 1000mm x 2000mm

LK024-D 2000mm x 2000mm x 2000mm

LK024-E 2000mm x 3000mm x 2000mm



LK024-E Shown with optional literature holders.



Straight Graphic Panel Kit A

Code: LK020

Suitable for looped fabric graphic.

Size options (h x w):

LK020-B 2000mm x 500mm

LK020-C 2000mm x 1000mm

LK020-D 2000mm x 2000mm

LK020-E 2000mm x 3000mm



Curved Linear Counter

Code: LK028

Size options:

LK028-001 2m radius x 30°

LK028-002 2m radius x 30° + top shelf (shown)

LK028-003 2m radius x 45°

LK028-004 2m radius x 45° + top shelf

Optional internal shelf (PK-S1S) available



Linear Lite Counter

Code: LK038

- Finished with PVC graphics (not included) fixed using steel/mag. tape making it lightweight and easy to transport
- Unit dimensions 1040 (h) x 915 (w) x 405 (d)
- Suitable for 300 - 450 micron PVC graphics

Recommended graphic area:

Front Panel 1000mm (h) x 798mm (w)

Side Panels 1000mm (h) x 230mm (w)

14

Vector Linear Kits

Linear Vector double-sided freestanding displays are perfect for branding messages and for creating environments, backdrops and screening; making them ideal for a wide range of applications.

Constructed from frameless aluminium components for seamless graphics, they are suitable for either lightweight fabric or rigid substrates.

Because Vector kits are modular, they can be reconfigured and added to as required, and as the graphics are front-fixing they can be applied in-situ, making them ideal for applications where the message changes regularly. A range of wall-mounted vector frames is also available.



KIT 1

Code: VKF-H4-SL
for fabric graphic

Code: VKR-H4-SL
for rigid graphic



KIT 3

Code: VKF-3H4-2SL
for fabric graphic

Code: VKR-3H4-2SL
for rigid graphic



KIT 5

Lights not included

Code: VKF-5H4-2P
for fabric graphic

Code: VKR-5H4-2P
for rigid graphic



KIT 6

LCD & lights not included

Code: VKF-4H4-2H2-3P
for fabric graphic

Code: VKR-4H4-2H2-3P
for rigid graphic

Promotional Units

We offer a diverse selection of units that will satisfy any promotional requirement, whether you need a cost-effective demonstrator unit, a promotional plinth or an exhibition show desk with storage. All our units can be flat-packed for easy transportation and can be quickly and easily assembled without tools. Add your own graphics to customise with your brand or promotional message.



V Counter Deluxe
Keystone Top

V Counter Deluxe Keystone

Code: PK30

A very robust, stylish counter or workstation with integral shelving and lockable storage. Ideal for applications where security is important.



Optional facia kit to customise with your own printed design.

Code: PK306

- 1020 (h) x 900 (w) x 550mm (d)
- Woodgrain, silver black and white colour options
- Sides available in silver and white

Counta

Code PC607

- Lightweight plastic, flat-pack promotional unit
- Extremely cost-effective
- Supplied with carry bag



Physique Tube Lite - Code PK119

A very simple and extremely lightweight range of display counters, ideal for PVC wraps * so you can use this plinth to display your message or branding.

- Choice of 6 top shapes in a choice of birch, silver, white or black finish
- Base wrap 400mm diameter

*Wrap not included.
Recommended 550 micron PVC



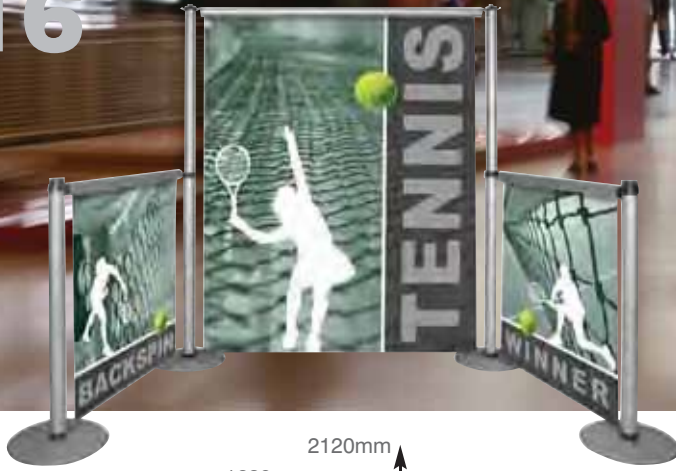
Saturn - Code PK188

- Built-in A4 size leaflet holder
- Stylish ellipse shaped
- Full Wrap size: 1060mm (h) x 1370mm (w)



Comet - Code PK189

- Stylish teardrop counter design
- Built-in A4 size leaflet holder
- Full Wrap size: 970mm (h) x 1365mm (w)
- Shown with optional integral banner



Adjustable to 3 height settings

1145mm

1620mm

2120mm



Aero - Code UB208

Aero is a smart and extremely versatile modular roller display system that is very easy to transport and assemble, making it ideal for all types of display application.

Whirlwind - Code UB207

A heavy-duty weather resistant swing sign that is ideal for pavement advertising and retail promotions.

- Double-sided snap frame sign suitable for A1 size posters
- Wheeled compact moulded hollow base for water or sand weighting
- Spring pivot for swing motion



Pegasus - Code UB165

Pegasus is the largest format tension banner in the range, ideal for exhibition environments. Designed for use with looped fabric graphic, which along with lightweight components, makes it very easy to pack down for transportation.



860-2435mm

1300-2410mm

A Sign Board - Code VF204-C

The external 'A' Sign Board has been specially developed for ease of use using our popular spring loaded Trappa Frame graphic holder.

- Double-sided snap frame sign
- Suitable for posters A1 size



Display Ideas

Our range of display solutions are suitable for a wide variety of display applications including in-store shopping centre and airport promotions, public and corporate environments and exhibitions. Here are just a few examples...



Strata & Orbita- Signage Solutions

Strata - Versatile cable display solutions with a choice of fixing options for wall or ceiling suspension.

Orbita - Stand-offs for signage or shelf mounts; quality components available in silk satin finish.



Spiral Display Systems



- Portable collapsible steel frame display case available as a tower or counter
- Supplied with padded wheeled carry bag



Twist and lock assembly



UB710
Plinth complete with
Beech finish top

Brand with
your own
graphic panels



UB710-001
Tower has a top
mounted downlighter

Panel Folding Kits - 6 panel kit - KK117

- Lightweight folding system with header panel
- Quick assembly
- Each panel is 900 (h) x 600mm (w)
- Available in 30 colour options



Also available in a range of different sizes and configurations.

Trappa/ Twista - Poster Frames and Rails

A range of anodised silver poster frames and rails. Ideal for quick-change retail or showroom promotions.



Twista Poster
Snap action
clamp rails in a
range of widths.



Trappa snap
action Poster
Frame.
Suitable for
wall mounting.



18

The Finishing Touch

Set off your presentation or exhibition with lighting for your display systems and contemporary portable furniture. You can even make use of your carry case by converting it into counter space, everything to complete the effect.



Ellipse Plus Pop-Up Case with optional case to counter conversion - Code: AC337

- Optional folding table top Code: CO337
- Optional fabric wrap Code: AC337-002
- Manufactured from tough moulded polyethylene
- Wheels and handle for easy transportation
- Case can accept one 3 x 4 curve or straight pop-up frame with graphic panels and magnetic bars
- Removable internal divider to protect graphics
- Removable internal divider to protect graphics
- Lighting insert can accept 2 halogen lights
- Unique built-in four pocket leaflet dispenser



Zeus Pop-Up Case - Code: AC338

- Optional folding table top Code: CO401
- Optional fabric wrap Code: CO203Z
- Manufactured from tough moulded polyethylene
- Wheels and handle for easy transportation
- Case can accept one 3 x 5 curved or straight pop-up frame with graphic panels and magnetic bars
- Removable internal divider to protect graphics
- Case can be locked using padlocks (not supplied)
- Lighting insert can accept 2 halogen lights

Powerspot 750-For panels, pop-ups and banners

Code: PS750

- 50 watt LV spotlight
- Available in black or silver
- Universal fitting



Powerspot 800-For banners

Code: PS800

Robust and fashionable quad light. Simple to attach with an integral bulldog clip.

- 35 watt LV spotlight
- Available in silver



Powerspot 950-For use with pop-up systems

Code: PS950

- 150 watt mains halogen light
- Available in black



Powerspot 1000-For panels pop-ups and Linear systems*

Code: PS1000

This contemporary styled floodlight, conveniently fits into the Elipse Plus case for safe carriage.

- 200 watt mains halogen floodlight
- Available in black or silver

*Linear systems require additional fitting



LED Floodlight-For panels, pop-ups and Linear

Code: PS1050

- Equivalent to 200 watt mains floodlight
- Long lasting and low heat emitting
- Available in silver
- Low power consumption
- Universal fitting



splash display



Splash Display Limited
New Solent House
1 Ashlett Road Fawley
Southampton Hampshire
SO45 1DS

www.splashdisplay.com info@splashdisplay.com
Telephone: 0845 226 1936 Fax: 0845 226 1937